



## Technical Documentation

How to configure  
Recipient filtering in Exchange Server 2003

## **Table of Contents**

Why configure recipient filtering .....	3
How to configure recipient filtering .....	4

## Why configure recipient filtering

In the default Exchange configuration, e-mail that is sent to “*e-mail\_domain.com*” is accepted as local regardless of the e-mail alias that the message is addressed to.

The e-mail alias is the part of the email address that is on the left side of the (@) symbol. If an email message is sent to an alias that is not valid, the Simple Mail Transfer Protocol (SMTP) service receives the whole message, and then queries the “Active Directory” directory service for a user or a distribution group that has a matching e-mail alias.

For example, if an email message is sent to “*invalid\_user\_name@domain.com*”, SMTP queries Active Directory for a user or a distribution group that has the “*invalid\_user\_name@domain.com*” alias.

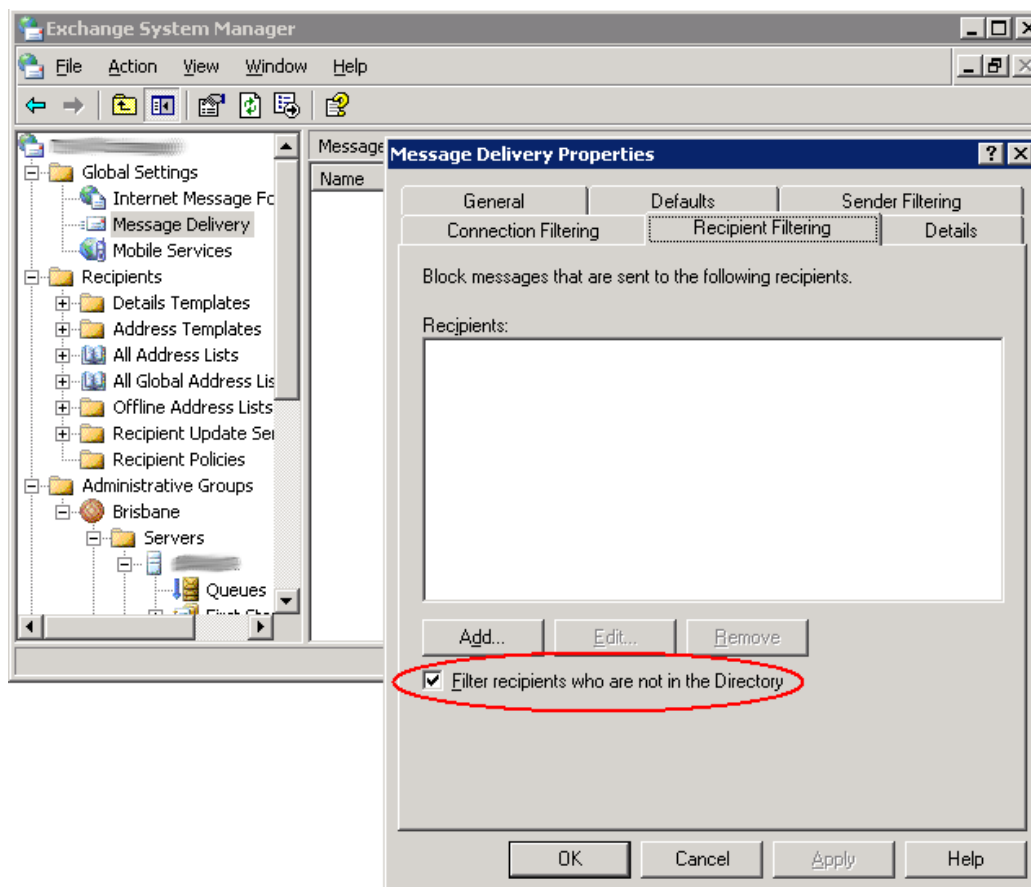
However, if the email alias does not exist, Exchange tries to send an NDR to the original email message sender. This can cause many messages, queues, or both, to appear in Exchange System Manager.

**Note** Recipient filtering is only available in Exchange 2003 Server.

## How to configure recipient filtering

Follow these steps:

1. Start the Exchange System Manager tool.
2. Expand **Global Settings**, right-click **Message Delivery**, and then click **Properties**.
3. Click the **Recipient Filtering** tab, click to select the **Filter recipients who are not in the Directory** check box, and then click **OK**.
4. When you receive the following message, click **OK**: *Connection, Recipient, and Sender filtering must manually be enabled on specific SMTP virtual server IP address assignments as they are not enabled by default. For more information on how to enable any of the above filtering types, read their associated help.*



5. Expand **Servers**, expand your computer, expand **Protocols**, expand **SMTP**, right-click **Default SMTP Virtual Server**, and then click **Properties**.
6. On the **General** tab, click **Advanced**.
7. Click **Edit**, click to select the **Apply Recipient Filter** check box, and then click **OK** three times.

